



Worthington Area Art League



Sue Cavanaugh

**Janaury 14, 2021**

# Agenda

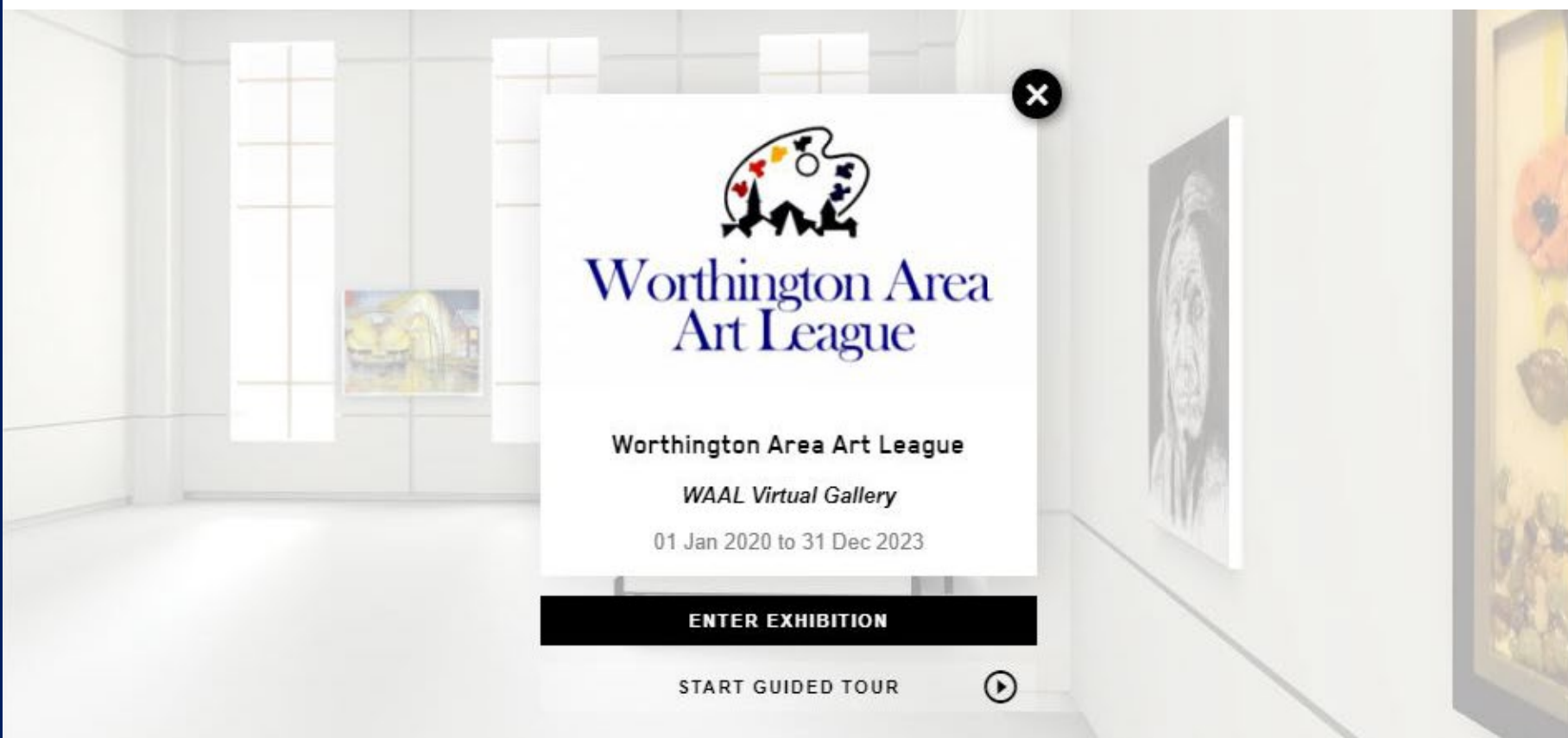
- Statements from the Board
  - Katherine Crowley, President
  - Beth Veldey, Vice President
  - Ana Maria Atwood, Treasurer
  - Jane Moore, Secretary
  - Chuck Zelms, Membership Chair
  - Matt Anderle, Webmaster
  - Sarah-Jane Workman, Community Engagement Chair
  - Katherine Crowley, Public Relations Chair
  - Janet Forbes-Green, Venues Chair

# President's Message

- Katherine Crowley, President
  - Happy New Year
  - Virtual Gallery
    - Entries due January 16
    - Enter on our website under the Membership tab > Call for Entry
    - Joe Lombardo will judge the exhibit
  - Critiques Continue
    - January 21 at 7:00pm via Zoom; all media, at any stage of completion
    - Send one image of a piece you would like to discuss to  
[President@WorthingtonAreaArtLeague.com](mailto:President@WorthingtonAreaArtLeague.com)

# President's Message

## Virtual Gallery





# President's Message

## Critique: Works in Progress by Our Members

Sylvia Bowers



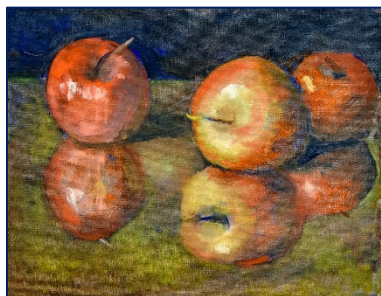
Joy Ritchie



Charlie Rowland



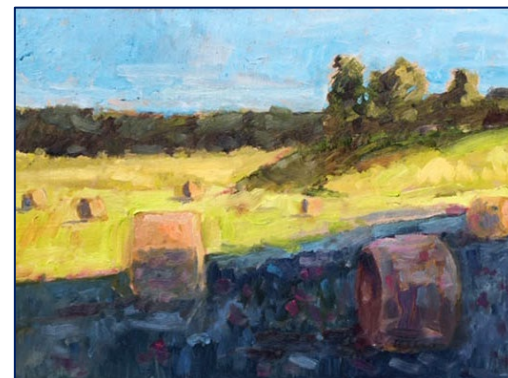
Bill Westerman



Judy Anderson



Rich Clem



# Vice President's Message

- Beth Veldey, Vice President
  - WAAL is pursuing a project to incorporate and file for tax-exempt status with the IRS.

WAAL is pursuing a project to incorporate and file for tax-exempt status with the IRS.

Isn't WAAL already tax exempt?

Yes and no.

WAAL operates as a non-profit association under Ohio state law

- Allowed to have revenue of \$5,000 or less annually without filing returns
- WAAL does not have tax-exempt status with the IRS which means donations are not tax-deductible

## Why is IRS tax-exempt status important?

*By comparison...  
Dublin Area Art  
League receives  
about \$400 per  
year from Kroger.*

- In some years, we exceed the IRS tax-filing limit of \$5,000 for gross receipts of an association. This may occur more often if we grow in members, portfolios, or other services.
- Not having an IRS tax exemption constrains our ability to raise money for projects and scholarships. Notecard sales are not what they were in the past.
- New funding sources for a tax-exempt:
  - Kroger funds and Amazon Smile
  - Donations from members or their estates
  - Donor Advised Funds
- When we apply for grants, they need to be managed by another party who has an IRS tax-exemption



How do we become an  
IRS non-profit?

Complete IRS 1023-EZ  
application

- Requires minor revisions to our bylaws and mission statement
- File Form 532B with the Ohio Secretary of State to become a corporation

## *Why incorporate?*

*It's not legally necessary now but it is prudent if we enter into contracts or acquire assets.*

- *Filing as a corporation solidifies our mission and bylaws providing consistent information to the IRS.*
- *Incorporation provides personal financial protection for directors in the event of a lawsuit.*

How does IRS recognition and incorporation change our procedures?

- WAAL will need to file an annual IRS return, 990-EZ
- Every five years, WAAL will need to file a Statement of Continued Existence with Ohio Secretary of State.

# Recommendation

- Register our name with Secretary of State
- Incorporate and apply for IRS tax-exempt status
- Apply for grant from the Worthington Arts Council to fund the project

Task	Cost
Hire a non-profit attorney to assist with changes to our bylaws and prepare corporate and IRS filings.	\$1,000
File incorporation documents with State of Ohio	99
File application for IRS tax-exempt status	275
Total	\$1,374

# From the Secretary's Desk

- Jane Moore, Secretary
  - Announcements for the Secretary's desk



# Membership Update

- Chuck Zelms, Membership Chair
  - Total new/renewed = 94 out of possible 124 memberships for 73%
  - 20 out of 24 for web gallery 83%
  - 65% of memberships collected via PayPal

# Website Statistics

- Matt Anderle, Webmaster

# Community Engagement

- Sarah-Jane Workman, Community Engagement Chair
  - Current Exhibitions in and around Worthington

# Social Media


- Katherine Crowley,  
Public Relations Chair
  - Andi Wolfe’s wood sculpture “When I Let Go of What I Am, I Become What I Might Be - No. 2” has been added to the Renwick Gallery of the Smithsonian Institution



# Area Venues

- Available Venues
    - Call Insurance
    - Central Park Apartments\*
    - Lume Eye Care
    - Park Apartments\*
    - Park National Bank\*
    - Sunny Street Cafe
    - Worthington Dental Group
- \* Open but not accessible by the public

- Currently Not Open
  - Worthington Community Center
  - Griswold Center
  - Worthington Municipal Building


Celebrating  
**50** Years  
of Art

Worthington Area Art League

[Home](#) [The League](#) [Calendar](#) [Artist Portfolios](#) [Membership](#)

[Home](#) > Protected: Venue Booking

**Protected: Venue Booking**



**Griswold Center**

**Reserve for two months at a time.** Both Griswold venues have a rod & hook hanging system. No wall labels, please. A list of your pieces and contact information may be hung or displayed on the table provided. Upstairs accommodates 15-20 pieces, depending on size. Some rods have multiple hooks for tandem arrangements. Downstairs can accommodate 10-12 pieces.

Event	Start	Status	Registration
Griswold Center – Upstairs – Nov/Dec	November 1, 2020	1 of 1 available	<a href="#">Sign Up</a> <a href="#">Read More</a>
Griswold Center – Downstairs – Nov/Dec	November 1, 2020	1 of 1 available	<a href="#">Sign Up</a> <a href="#">Read More</a>

artinview2021