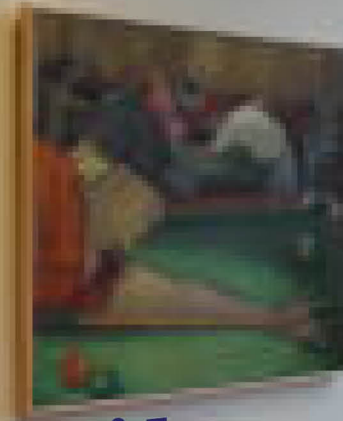
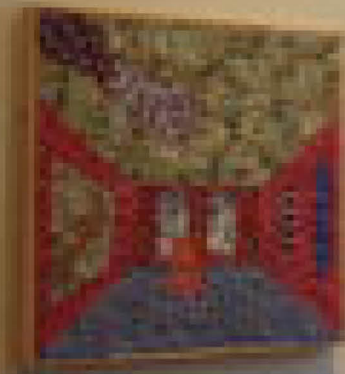




# Worthington Area Art League



An Interview with

Sarah Gromley

February 11, 2021

# Agenda

- Statements from the Board
  - Katherine Crowley, President
  - Beth Veldey, Vice President
  - Ana Maria Atwood, Treasurer
  - Jane Moore, Secretary
  - Chuck Zelms, Membership Chair
  - Matt Anderle, Webmaster
  - Sarah-Jane Workman, Community Engagement Chair
  - Katherine Crowley, Public Relations Chair
  - Janet Forbes-Green, Venues Chair

# President's Message

- Katherine Crowley, President



All Member Group

## Winter Show

Elizabeth Veldey, Exhibit Chair  
Joseph Lombardo, Judge

February 1 - March 31, 2021  
Online Opening Reception February 14, 2:00pm

Zoom Meeting ID: 827 2982 3825  
Passcode: 091384

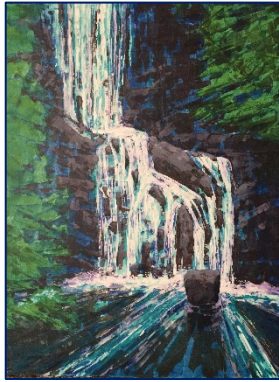
# President's Message

- Katherine Crowley, President
  - Critiques Continue
    - February 18<sup>th</sup> at 7:00pm via Zoom; all media, at any stage of completion
    - Send one image of a piece you would like to discuss to [President@WorthingtonAreaArtLeague.com](mailto:President@WorthingtonAreaArtLeague.com)

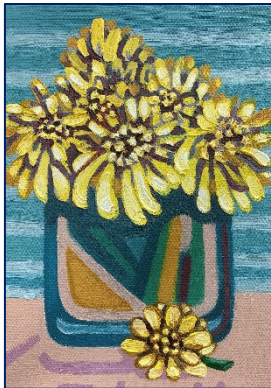
# President's Message

## Critique: Works in Progress by Our Members

Diana Andrews



Katie Crowley



Beth Veldey



Matt Anderle



# Vice President's Message

- Beth Veldey, Vice President
  - How to navigate the Winter Show virtual gallery
  - Notice of grant award will be after February 14<sup>th</sup>
  - Speaker - Leah Wong
    - Leah takes inspirations from nature, light, plants, and mirrored reflections in water. She combines drawings and cutouts with multiple layers that increase the visual complexity and experience. From multiple perspectives, her cutout and display layouts bring forth mental landscapes that are incorporated into specific sites. Light and shadows add depth to energize viewers' visual experience, which can be spiritual, psychological, and/or optical.

# From the Secretary's Desk

- Jane Moore, Secretary
  - Announcements for the Secretary's desk

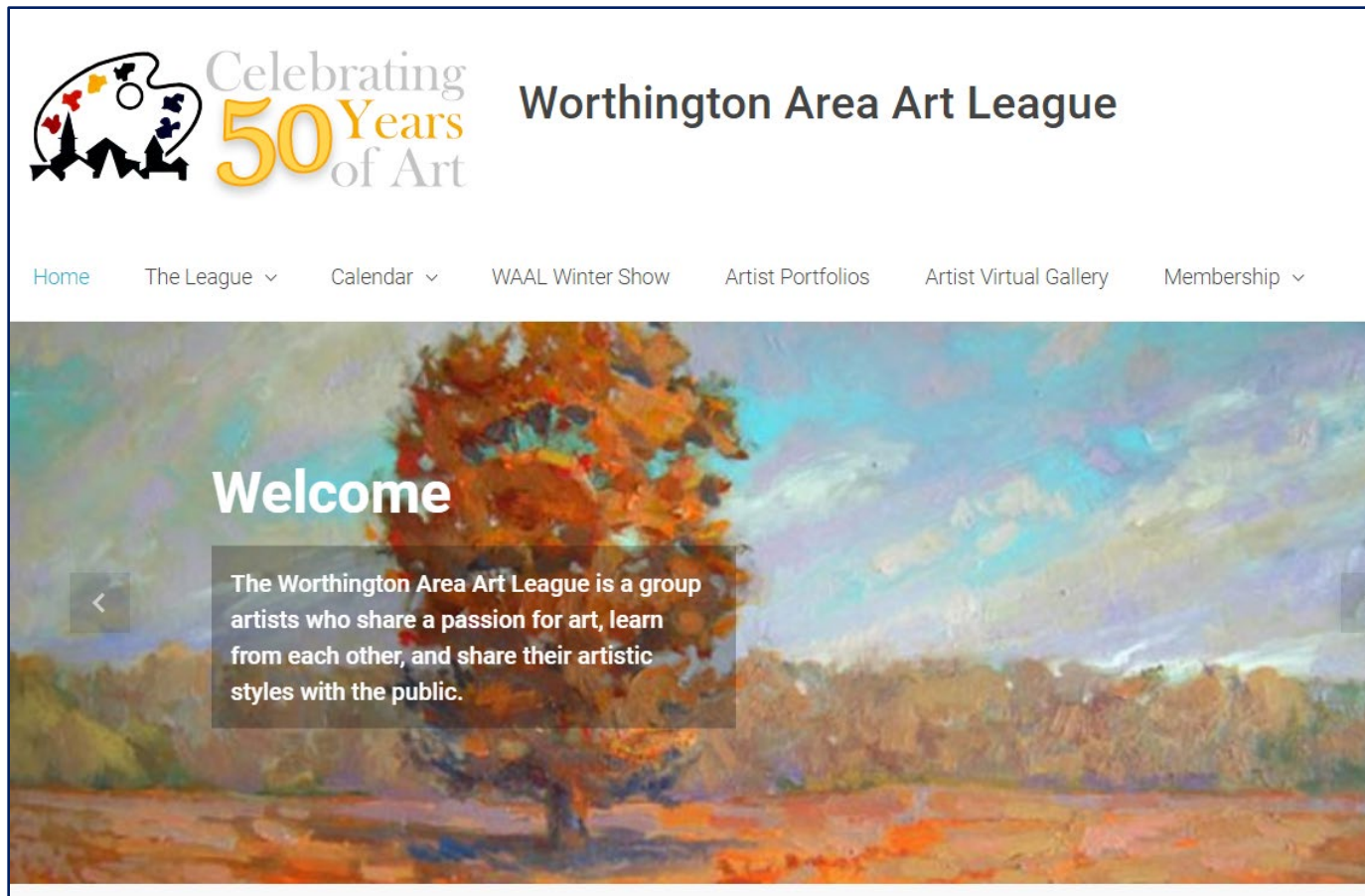
# Membership Update

- Chuck Zelms, Membership Chair
  - Total new/renewed = 92 out of possible 126 memberships for 73%
  - 20 out of 24 for web gallery 83%
  - 65% of memberships collected via PayPal



# Website Statistics

- Matt Anderle, Webmaster



# Community Engagement

- Sarah-Jane Workman, Community Engagement Chair
  - Conversation and Coffee with Inga Smith, Cultural Arts Center, February 18<sup>th</sup>, 12:00-1:00pm

On February 18th Inga Smith will be the Zoom speaker at the Cultural Arts Center 's Coffee and Conversation program from 12:00-1:00. “ I will be sharing some of my photographs in more or less three categories: Favorites, Whimsical, and "Lucky Shots". Note: The programs start punctually on the dot of 12:00 and end on the dot of 1:00. I hope some of you will be able to attend.”

<https://www.culturalartscenteronline.org/programs/conversations-coffee>

# Community Engagement

- Sarah-Jane Workman, Community Engagement Chair
  - Survival of the Arts: Now or Never, Presentation at the Columbus Metropolitan Club, February 3, 2021
    - Ohio Citizens for the Arts motto, “Make Art. Not COVID” is a powerful message of hope. COVID has been a devastating blow to Columbus’ thriving creative center. Our panel will discuss the challenges and opportunities the changing landscape has presented the arts community.
    - Carol A. McGuire Legacy Forum Celebrating Arts and Culture Featuring Angela Meleca, Executive Director, Ohio Citizens for the Arts; Marshall Shorts, Creative-N-Chief, Artfluentia, Co-Founder, Creative Control Fest; and Janet Chen, CEO, ProMusica Chamber Orchestra, with host Tom Katzenmyer, President and CEO, Greater Columbus Arts Council.

<https://www.youtube.com/user/adrewbart/videos>

# Community Engagement

- Sarah-Jane Workman, Community Engagement Chair
  - “AiR: Artist in Residency”
    - Something BIG is coming to the Cultural Arts Center...and YOU can be a part of it! Announcing "AiR: Artist in Residency" coming summer and fall 2021. We will begin accepting applications for both panelists and participants on February 15th, 2021.

<https://www.culturalartscenteronline.org/programs/artist-in-residence>

# Community Engagement

- Sarah-Jane Workman, Community Engagement Chair
  - Akron Art Museum
    - Explore the Galleries from Home  
<https://akronartmuseum.org/on-view/>
    - Virtual Artist Talks  
<https://akronartmuseum.org/on-process/>
  - Art Institute of Chicago
    - Monet and Chicago online exhibition  
<https://www.artic.edu/exhibitions/9036/monet-and-chicago>
  - National Gallery of Art, Washington, D.C.
    - Degas at the Opera Virtual Tour  
<https://www.nga.gov/features/degas-virtual-tour.html>
    - Raphael and His Circle Virtual Tour  
<https://www.nga.gov/features/raphael-virtual-tour.html>

# Social Media

- Katherine Crowley, Public Relations Chair



All Member Group

## Winter Show

Elizabeth Veldey, Exhibit Chair  
Joseph Lombardo, Judge


February 1 - March 31, 2021  
Online Opening Reception February 14, 2:00pm

Zoom Meeting ID: 827 2982 3825  
Passcode: 091384

# Area Venues

- Available Venues
    - Call Insurance
    - Central Park Apartments\*
    - Lume Eye Care
    - Park Apartments\*
    - Park National Bank\*
    - Sunny Street Cafe
    - Worthington Dental Group
- \* Open but not accessible by the public

- Currently Not Open
  - Worthington Community Center
  - Griswold Center
  - Worthington Municipal Building


Celebrating  
**50** Years  
of Art

Worthington Area Art League

[Home](#) [The League](#) [Calendar](#) [Artist Portfolios](#) [Membership](#)

[Home](#) > Protected: Venue Booking

**Protected: Venue Booking**



**Griswold Center**

**Reserve for two months at a time.** Both Griswold venues have a rod & hook hanging system. No wall labels, please. A list of your pieces and contact information may be hung or displayed on the table provided. Upstairs accommodates 15-20 pieces, depending on size. Some rods have multiple hooks for tandem arrangements. Downstairs can accommodate 10-12 pieces.

Event	Start	Status	Registration
Griswold Center – Upstairs – Nov/Dec	November 1, 2020	1 of 1 available	<a href="#">Sign Up</a> <a href="#">Read More</a>
Griswold Center – Downstairs – Nov/Dec	November 1, 2020	1 of 1 available	<a href="#">Sign Up</a> <a href="#">Read More</a>

artinview2021

## **Worthington Area Art League**

### **General Meeting**

**February 11, 2021**

**Community Liaison:** Sarah Jane began the meeting with a list of community activities that may interest members:

Applications now being taken for artist in residence at the Riffe Center. These are seasonal appointments. The artist will have a studio in the center and a personal show.

Virtual shows are now on view Cols Metro Museum, Akron Art Mus., Art Inst. Of Chicago and the National Gallery.

A conversation with Inga Smith is available from the Cultural Arts Center on Feb. 18<sup>th</sup> at 12:00 N.

**Programs:** Beth announced the WAAL will have a group show at First Merchants in Grandview in July and August this year. This will be held during the Grandview Art Walk so should get increased visitor traffic

The current show on the Web Site will be on display through the end of Feb. Reception will be held on Feb. 15 and winners will be announced at the time.

The next Critique will be held on the 18<sup>th</sup> at 7:00

**Treasurer:** Anna announced the balance of funds. Revenue was earned from the current exhibit of 32 artists.

**Membership:** Chuck reported 92 members have renewed after reminder letters were mailed. That is down from 124 last year.

This evenings speaker was Sarah Gormley, Owner of Sarah Gormley Studios in the Short North.

Respectively submitted

Jane Moore