



Worthington Area Art League



Leah Wong

March 11, 2021

Agenda

- Statements from the Board
 - Katherine Crowley, President
 - Beth Veldey, Vice President
 - Ana Maria Atwood, Treasurer
 - Jane Moore, Secretary
 - Chuck Zelms, Membership Chair
 - Matt Anderle, Webmaster
 - Sarah-Jane Workman, Community Engagement Chair
 - Katherine Crowley, Public Relations Chair
 - Janet Forbes-Green, Venues Chair

President's Message

- Katherine Crowley, President
 - Over 450 visitors to our Winter Show



All Member Group

Winter Show

Elizabeth Veldey, Exhibit Chair
Joseph Lombardo, Judge

February 1 - March 31, 2021
Online Opening Reception February 14, 2:00pm

Zoom Meeting ID: 827 2982 3825
Passcode: 091384

President's Message

- Katherine Crowley, President
 - Critiques Continue
 - March 18th at 7:00pm via Zoom; all media, at any stage of completion
 - Send one image of a piece you would like to discuss to President@WorthingtonAreaArtLeague.com
 - 2021 Meeting Minutes added to the WAAL Website
 - Does not include financial information

President's Message

Critique: Works in Progress by Our Members

Diana Andrews



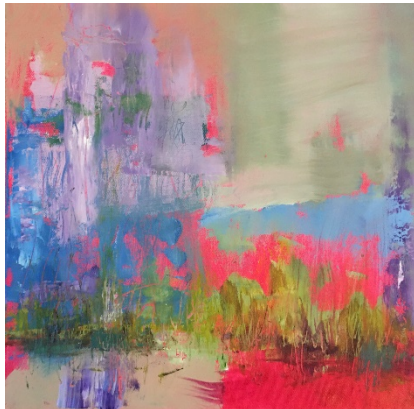
Beth Veldey



Justin Dancing Hawk



Ruth Ann Mitchell



Charles Rowland



President's Message

- McConnell Arts Center Update
 - Worthington Arts Festival Cancelled for 2021
 - However, the MAC will be offering several smaller outdoor programs throughout the summer to engage with the community.
 - Summer Camps
 - *Family Colors*, exhibit by Betsy & Derek DeFusco
 - Outdoor concerts, movies & events on the lawn over the summer months.

Vice President's Message

- Beth Veldey, Vice President
 - Our application for a grant from the Worthington Arts Council was approved to become a 501(c)3 organization.
 - Upcoming Speakers
 - April 8 - Leah Gray
 - May 13 - Jeremy Rosario
 - Future Programming
 - What are your interests for future programs? WAAL has been approached speakers offering presentations about art blogging and giclee and other art printing by a local business.

From the Secretary's Desk

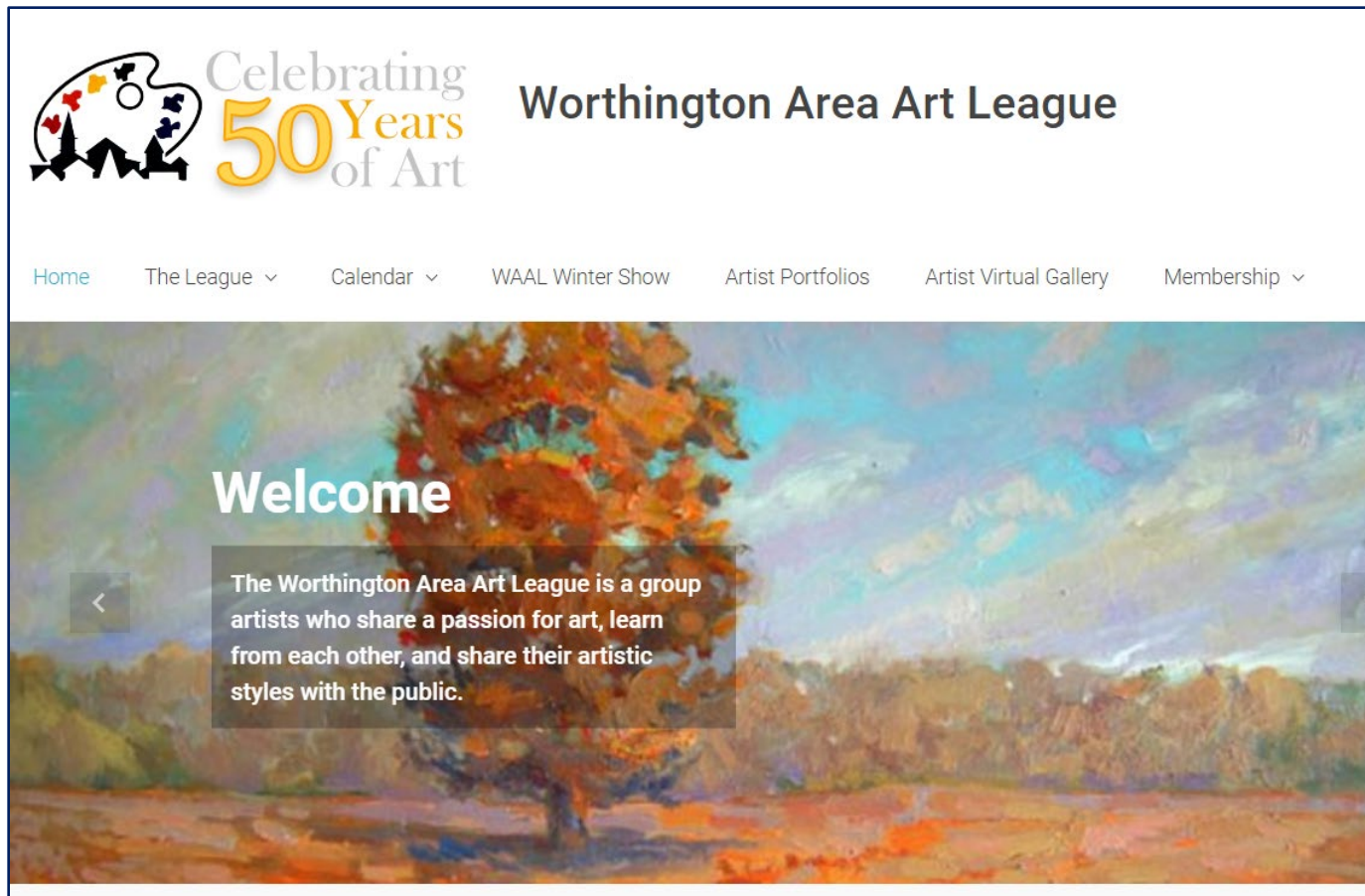
- Jane Moore, Secretary
 - Announcements for the Secretary's desk

Membership Update

- Chuck Zelms, Membership Chair
 - Total new/renewed = 94 out of possible 128 memberships for 73%
 - 20 out of 24 for web gallery 83%
 - 65% of memberships collected via PayPal
 - Membership fees collected this year: \$2890.00
 - Gallery fees collected this year: \$530.00

Website Statistics

- Matt Anderle, Webmaster



Community Engagement

- Sarah-Jane Workman, Community Engagement Chair
 - Columbus Museum of Art
 - Can You Name 5 Women Artists?
In honor of Women's History Month in March, Columbus Museum of Art joins the National Museum of Women in the Arts and hundreds of museums around the U.S., in the third annual #5WomenArtists campaign. "Can you name five women artists?"
<https://www.columbusmuseum.org/womens-history-month/>
 - Aminah's Art Practice
Thursday, March 18, 12:30 PM - 1:10 PM; Online
Do you want to be inspired by the creativity and techniques of Aminah Brenda Lynn Robinson? This 40-minute online experience for adults will dive into.

Community Engagement

- Sarah-Jane Workman, Community Engagement Chair
 - Columbus Museum of Art
 - Wednesdays@2: Women Artists
CMA, in partnership with Columbus Symphony Orchestra (CSO), presents this afternoon series pairing lectures exploring works of art with chamber music performances. This program features two great women artists, Mary Cassatt and Georgia O’Keeffe, who both offer a study in contrasts and stories of persistence in the male-dominated art world.
 - Riffe Gallery
 - Collage of Women Artists in the Lobby at the Riffe Gallery
77 S. High St. Columbus, Ohio
<http://www.collageofwomenartists.com/collage-of-women-artists-at-the-riffe-gallery.html>
<http://www.collageofwomenartists.com/>

Community Engagement

- Sarah-Jane Workman, Community Engagement Chair
 - Women's History Month Events in Columbus
 - Women's History Month is celebrated annually in March to highlight the contributions of women throughout history and in contemporary society. There are a number of events in Columbus to help honor achievements of women across many eras and industries Two events are online at the Billy Ireland Cartoon Library and the Wexner Center
<https://www.experiencecolumbus.com/blog/post/womens-history-month-events-in-columbus/>

Community Engagement

- Sarah-Jane Workman, Community Engagement Chair
 - Greater Columbus Arts Council New Opportunities
<https://www.gcac.org/workshops-and-resources/opportunities-for-artists/>

Social Media

- Katherine Crowley, Public Relations Chair



All Member Group

Winter Show

Elizabeth Veldey, Exhibit Chair
Joseph Lombardo, Judge

February 1 - March 31, 2021
Online Opening Reception February 14, 2:00pm

Zoom Meeting ID: 827 2982 3825
Passcode: 091384

Social Media

- 17th Annual Bryn Du Art Show
 - WAAL Artists:
 - Marcia Lang Canter
 - Linda Coe
 - Allison Collamore
 - Justin Collamore (2 pieces)
 - Jane Flewellen
 - Angela Gage
 - Dana Grubbe
 - Mark Ramsey
 - Beth Veldey
 - Darlene Yeager-Torre.
- <https://www.bryndu.com/bryn-du-art-show>

Area Venues


- Available Venues

- Call Insurance
- Central Park Apartments*
- Lume Eye Care
- Park Apartments*
- Park National Bank*
- Sunny Street Cafe
- Worthington Dental Group

* Open but not accessible by the public

- Currently Not Open for Art Display

- Worthington Community Center
- Griswold Center
- Worthington Municipal Building


Celebrating
50 Years
of Art

Worthington Area Art League

[Home](#) [The League](#) [Calendar](#) [Artist Portfolios](#) [Membership](#)

[Home](#) > Protected: Venue Booking

Protected: Venue Booking



Griswold Center

Reserve for two months at a time. Both Griswold venues have a rod & hook hanging system. No wall labels, please. A list of your pieces and contact information may be hung or displayed on the table provided. Upstairs accommodates 15-20 pieces, depending on size. Some rods have multiple hooks for tandem arrangements. Downstairs can accommodate 10-12 pieces.

Event	Start	Status	Registration
Griswold Center – Upstairs – Nov/Dec	November 1, 2020	1 of 1 available	Sign Up Read More
Griswold Center – Downstairs – Nov/Dec	November 1, 2020	1 of 1 available	Sign Up Read More

artinview2021