



Worthington Area Art League



Jeremy Rosario
May 13, 2021

Agenda

- Statements from the Board
 - Katherine Crowley, President
 - Beth Veldey, Vice President
 - Ana Maria Atwood, Treasurer
 - Jane Moore, Secretary
 - Chuck Zelms, Membership Chair
 - Matt Anderle, Webmaster
 - Sarah-Jane Workman, Community Engagement Chair
 - Katherine Crowley, Public Relations Chair
 - Janet Forbes-Green, Venues Chair

President's Message

- Katherine Crowley, President
 - Recent Board Meeting
 - Financial Review
 - Our revenue this year is lower than recent years due to a decrease in membership. Our finances are stable, but we are hoping that memberships will increase as COVID-19 restrictions relax.
 - Scholarship Program
 - Three Worthington High School students will be presented awards at our June Meeting.
 - Grant Funding
 - Future Exhibits
 - WAAL Summer Show; June-July; Seeking Chair
 - First Community Church; August-September; Ruth Ann Mitchell, Chair.
 - Responding to COVID-19
 - We will continue to follow State guidelines

President's Message

- Katherine Crowley, President
 - It is not too early to think about who will be leading our group into 2022.
 - Our next election takes place in July; the new term commences in September.
 - WAAL offers elected Officer & volunteer Chair positions
 - Share your expertise
 - Learn something new
 - Become involved in moving the League forward
 - Current Board Members will provide plenty of support

President's Message

- Katherine Crowley, President
 - Seeking a Chair for the WAAL Summer Show
 - June 1st - July 31st
 - The show will be held virtually with an online awards ceremony
 - First Place will earn a private virtual gallery room to show multiple pieces within the group exhibit
 - We will train you to curate the perfect show
 - A great opportunity to learn a new skill

President's Message

- Katherine Crowley, President
 - 2020-2021 Recorded Meetings & Meeting Minutes are available on the WAAL Website
 - Does not include financial information
 - Critiques Continue
 - May 27th at 7:00pm via Zoom; all media, at any stage of completion
 - Send one image of a piece you would like to discuss to President@WorthingtonAreaArtLeague.com

President's Message

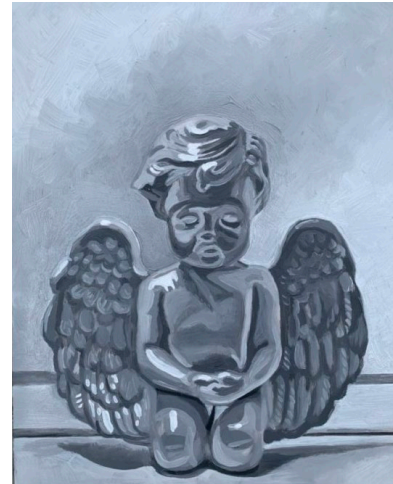
Critique: Works in Progress by Our Members



Beth
Veldey



Laurel
Richardson



Katherine
Crowley



Justin
Dancing Hawk

Vice President's Message

- Beth Veldey, Vice President

Update on 501c3 project

- Preparing for upcoming meeting
 - Sign “Engagement Letter” with attorney
 - Sign power of attorney to enable her to file state and IRS formation documents
 - Pay \$500 retainer (project total attorney's fees of \$1,000)
- Completed for attorney review
 - Bylaw review
 - Board job descriptions

Vice President's Message

Upcoming Programs

- June 10 - Scholarship Student Work - We will interview and present the work of three Worthington high school students who were chosen by their teaches for a WAAL scholarship.
- July 8 - Kyla Zoe Rafert - Kyla is a painter whose work as been displayed at the Gormley Gallery. She paints incredibly detailed interior scenes that mix people, animals, replicas of the old masters, and great wallpaper. Kyla's website
- August 12 - Amy Adams - Amy's oil paintings are inspired by Joaquin Sorolla. She paints light and shadow relationships to tell a story of how scene exists in that one moment. Amy's website
- September 9 - Annual WAAL members' show and tell. - If we do this online, you will be asked to email photos of the pieces you want to show. If we are meeting in person, bring something you have been working on during the past year.

A Note from the Treasurer

- Ana Atwood, Treasurer

From the Secretary's Desk

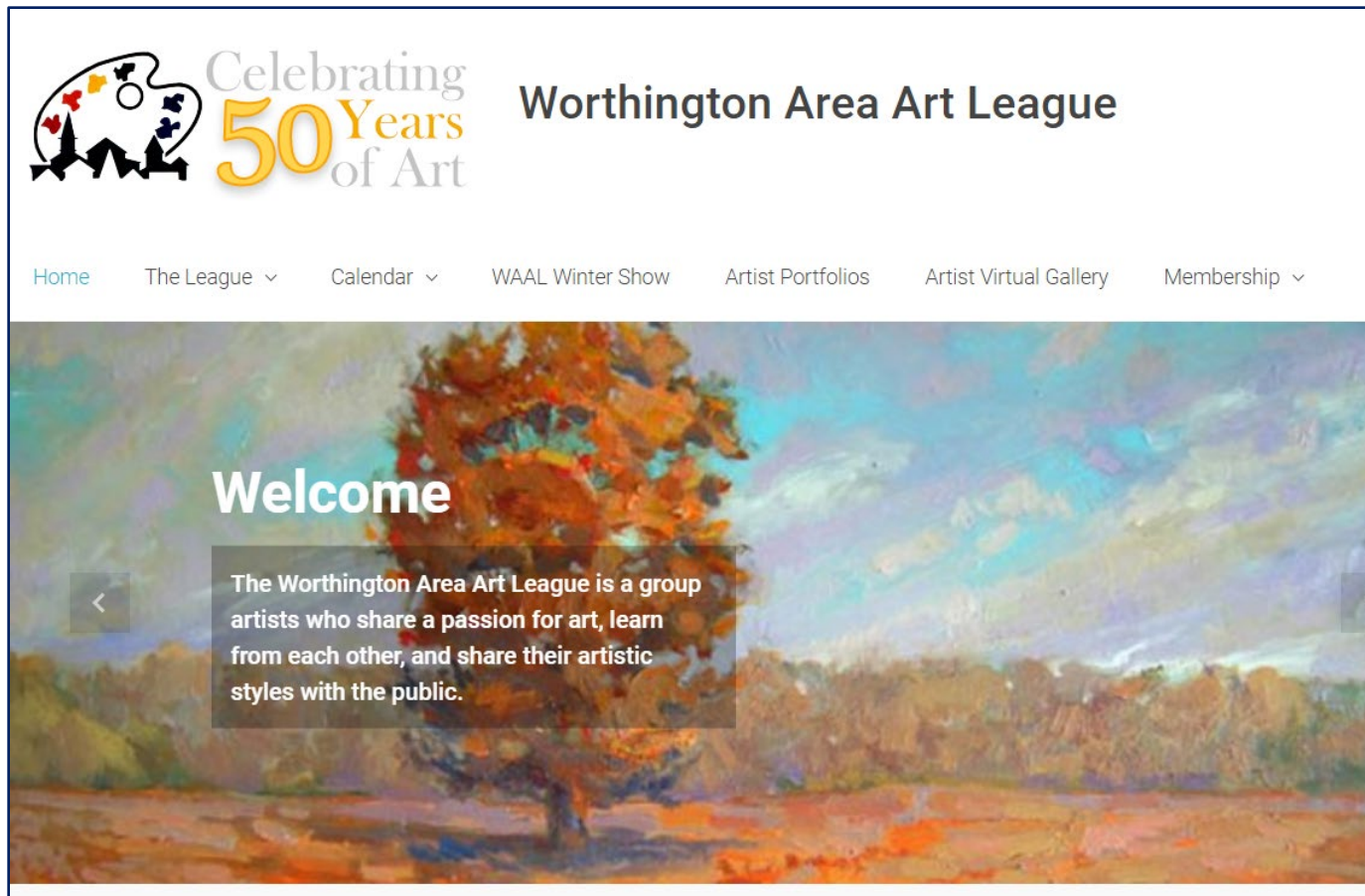
- Jane Moore, Secretary
 - Announcements for the Secretary's desk

Membership Update

- Chuck Zelms, Membership Chair
 - Total new/renewed = 95 out of possible 129 memberships for 74%
 - One new membership!!!! Yea!
 - 65% of memberships collected via PayPal
 - 20 out of 24 paid for web gallery 83%

Website Statistics

- Matt Anderle, Webmaster



Community Engagement

- Sarah-Jane Workman, Community Engagement Chair
 - Cultural Arts Center's Conversations & Coffee
 - May 27th @ 12PM
Glass artist Bryan Fumo will discuss techniques, best practices & more.
 - June 10th @ 12PM
WAAL artist Dana Grubbe and Kari Djuve, both part of the group exhibition "Four Visions of Abstraction".
 - June 17th @ 12PM
Karen Torvik and Patti Sandilands, both part of the group exhibition "Four Visions of Abstraction".

<https://www.culturalartscenteronline.org/programs/conversations-coffee/>

Community Engagement

- Sarah-Jane Workman, Community Engagement Chair
 - Greater Columbus Arts Council New Opportunities
<https://www.gcac.org/workshops-and-resources/opportunities-for-artists/>

Social Media

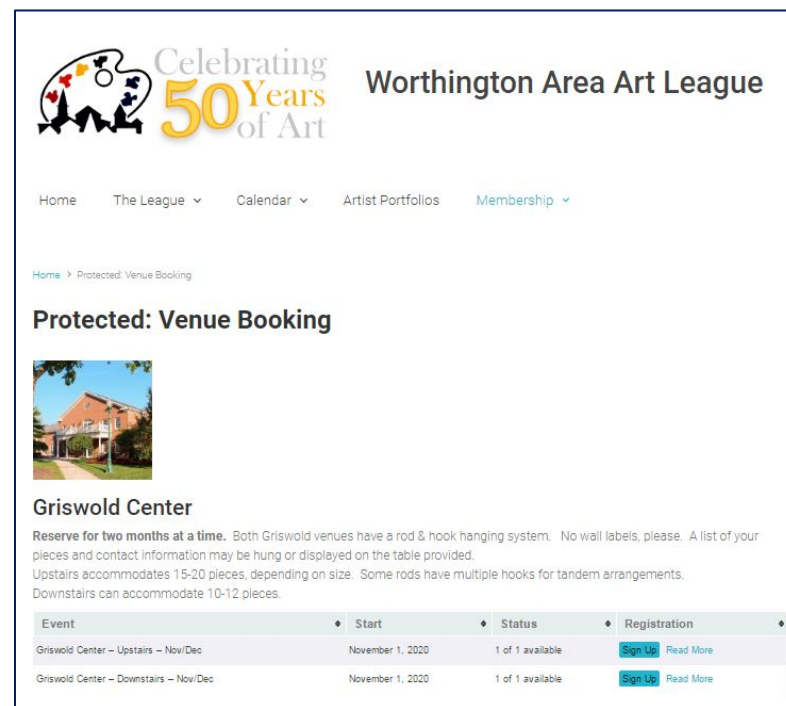
- Katherine Crowley, Public Relations Chair
 - Ann Kete solo show at Hayley Gallery, opening reception May 15th
 - Rod Hayslip show at Art Access gallery, opening reception April 23rd
 - “Aida Garrity Dublin Golfscapes” at Dublin Arts Council, April 27th - June 7th

Area Venues

- Janet Forbes-Green, Venues Chair

- Call Insurance (Available)
- Central Park Apartments*
- Lume Eye Care (July/Aug)
- Park Apartments*
- Park National Bank*
- Sunny Street Café: (July/Aug)
- Worthington Dental Group (July/Aug)
- Worthington Community Center (Oct/Nov)
- Griswold Center*
- Worthington Municipal Building*

* Open but not accessible by the public




Worthington Area Art League

Home The League Calendar Artist Portfolios Membership

Home > Protected: Venue Booking

Protected: Venue Booking



Griswold Center

Reserve for two months at a time. Both Griswold venues have a rod & hook hanging system. No wall labels, please. A list of your pieces and contact information may be hung or displayed on the table provided. Upstairs accommodates 15-20 pieces, depending on size. Some rods have multiple hooks for tandem arrangements. Downstairs can accommodate 10-12 pieces.

Event	Start	Status	Registration
Griswold Center – Upstairs – Nov/Dec	November 1, 2020	1 of 1 available	Sign Up Read More
Griswold Center – Downstairs – Nov/Dec	November 1, 2020	1 of 1 available	Sign Up Read More

artinview2021
or contact Janet Forbes-Green